

The demands on an organisation to protect the welfare of its personnel and critical infrastructure from attempts to disrupt operational continuity are topics requiring constant review.

Northern Services cabinet scanners provide a compact cost effective threat detection solution without the space requirements and operating costs of a conveyor based X-ray system.

The **TR40** is the largest cabinet scanners in the range, the generous chamber can accommodate mail sacks, large boxes and courier deliveries, with its one touch operation the **TR40** allows rapid processing of scanned items all within a compact footprint.

## We See Things Differently

The in-built enhancement tools of the **TR40** enable the captured image to be further investigated. The remote networking capabilities make for easy sharing and storage of images and can be utilised as part of the organisations escalation process. With Enhanced Powder Detection (EPD™) software as standard, powder based threats items can also be interrogated.

## Cabinet X-ray Scanners Can Be Used For Multiple Applications:

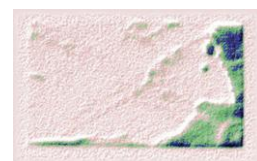
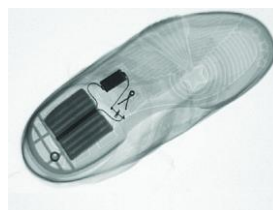
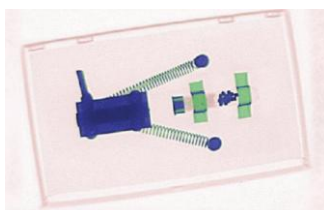
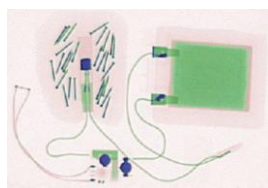
- ✓ Mail Rooms
- ✓ Reception Areas (Scanning of post)
- ✓ Goods In (screening of parcels)
- ✓ Executive mail screening
- ✓ Loss Prevention
- ✓ Contraband detection

# TR40

## Large Cabinet X-ray Scanner



■ Design ■ Manufacture ■ Installation ■ Training ■ Service



## Features and Benefits

Feature	Benefit
<b>Image Enhancement</b>	
EPD™ Enhanced Powder Detection	Heightened ability to identify threats conveyed via powder based elements
Negative Image Function	Identity of high density materials. e.g. (metal) shown up white against a black background
High Density Alert	Aids identification of materials such as plastic explosives
Medium Density Alert	Identification of medium density such as alloys & mild steel
3 Point Density Alert	Elements of a 'suspect devices' metal components e.g. detonators & batteries are more easily defined
<b>Operating System</b>	
"One Touch" to energise X-Ray generation	Simple 3 second quick operation maximises through-put of mail
User admin log in	Record of scanner use ensures operation is undertaken only by designated operators
Record user metrics	Management of operators ensuring safe, correct and effective processing
Administrator Function	Manage data related to scanner usage. Identification of further training requirements
Operator Icon toolbar	Quickly selection of tools to verify object is " Safe or Suspect" then to store or share the image
Training CD	Optimises scanner use and heightens threat awareness
<b>Image Storage &amp; Sharing</b>	
Print/Export images	A hard copy library can be created for reference or to aid image share
Automatic Image archiving	Cross reference and accelerated referral to security personnel
One Touch Email Function	Enables escalation process to be shared across departments

### General Dimensions – TR40

#### Cabinet

Height: 1804mm  
 Width: 576mm  
 Depth: 589mm  
 Net Weight: 220kg

#### Inspection Chamber

Height: 632mm  
 Width: 569mm  
 Depth: 509mm

#### Image Area

Width: 480mm  
 Depth: 480mm

#### Door Opening

Height: 626mm  
 Width: 487mm

## Product Specification

### Image and Unit Performance

- TFT Monitor 19" LCD
- Image Resolution 1280 x 1024 pixels
- Wire Resolution: 36AWG
- Steel Penetration: 3mm

### X-ray Generator

- Anode Voltage 80kV

### Operating Requirements & Environment

- Power Requirement: 240v/110v, 50/60Hz, 1000W
- Operating Temperature: 0 to +40°C
- Storage Temperature: -15°C to +50°C
- Relative Humidity: 85% non condensing
- Supplied with 1.5m power cable

### Health & Safety and Compliance

- All equipment complies with applicable International Health & Safety regulations
- Leakage dose at outer surface <1.0µSv/h as specified in Ionising Radiation Regulations 2017 (IRR17)
- Complies with European Directive 93/68/EEC
- Twin circuit electro-magnetic safety interlocks to BS EN 60204-1

### Optional Extras

- Inkjet Printer
- Monitor Stand
- Cabinet Test Piece (CTP)
- External Uninterrupted Power Supply (UPS)

TR40 - Front View

TR40 - Side View

