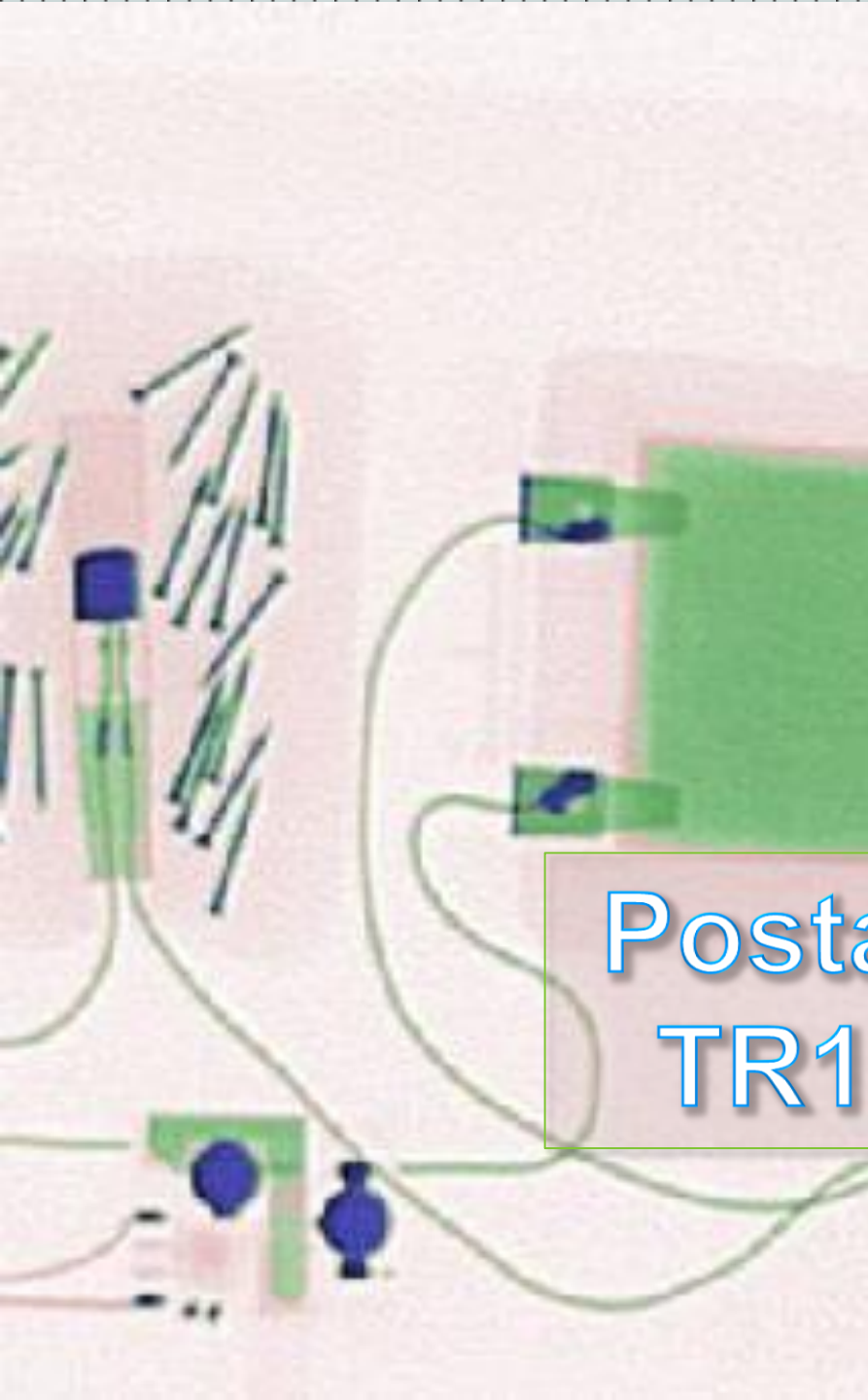
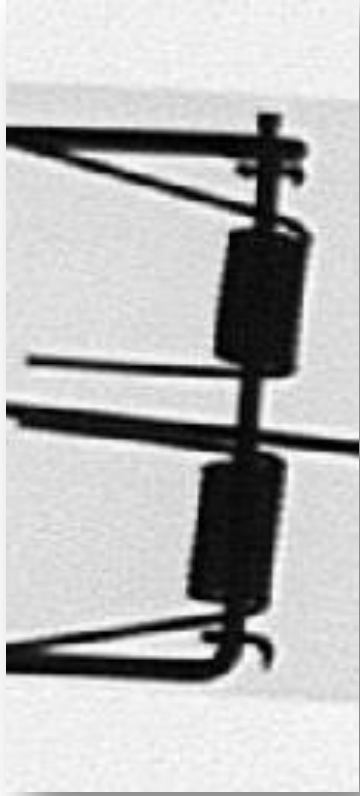


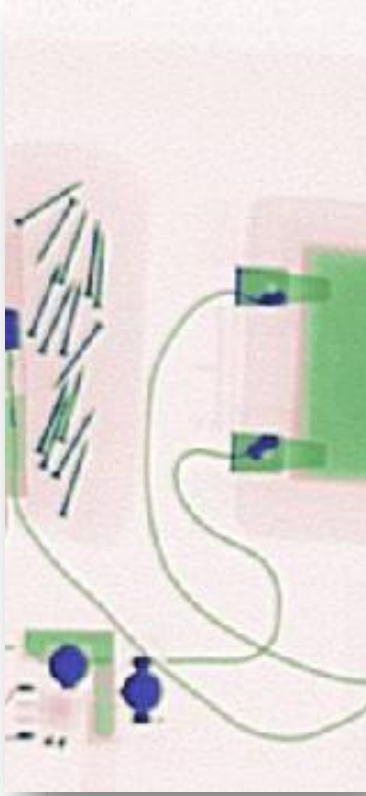
TR15 +  
Smart  
Scan



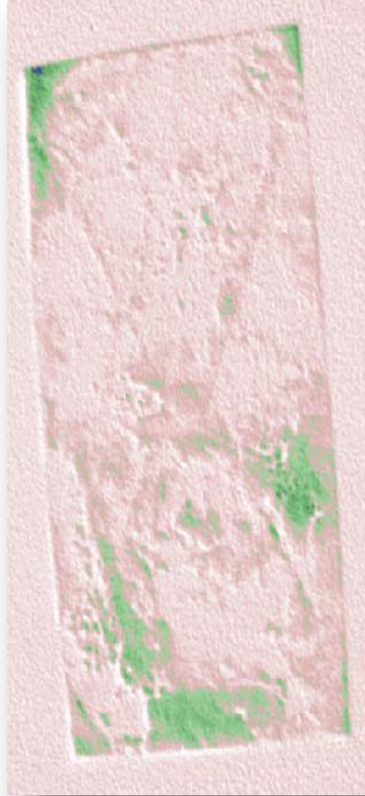
# Postal Scanning with TR15 + Smart Scan



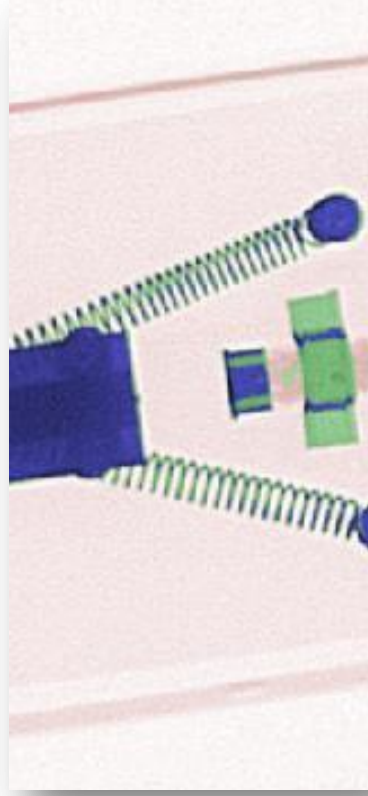
Low-Tech Malicious Threats



Explosive ad incendiary Threats

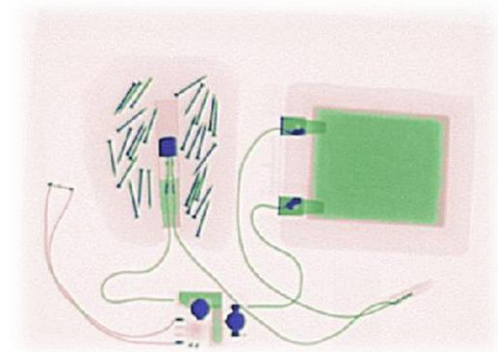
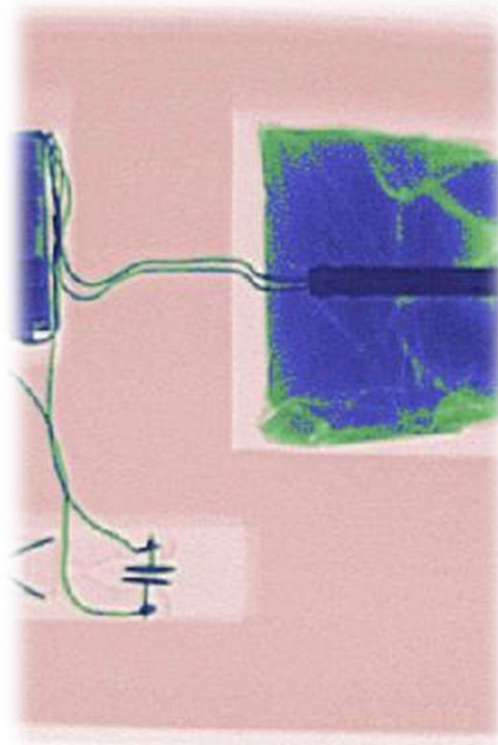


Bio Hazardous Powder Threats



Improvised mechanical Devices

+ Typical Threats

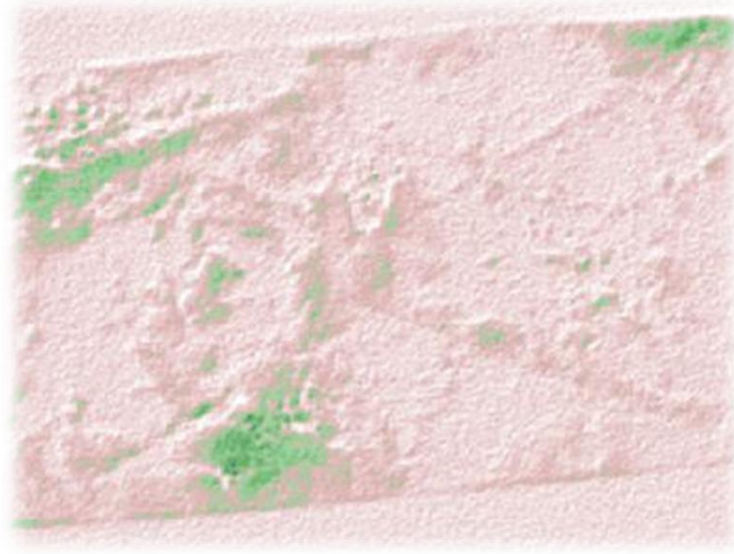


**TR15 – Smart Scan** – Can easily detect the component parts of IEDs and IID devices.

TR15 detects the various densities of the components and clearly reveals

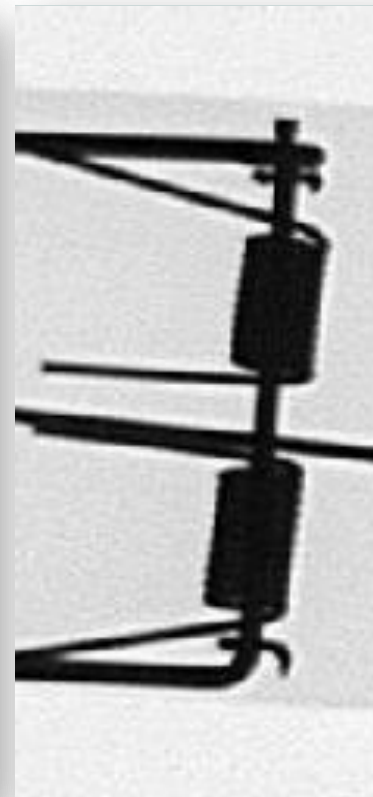
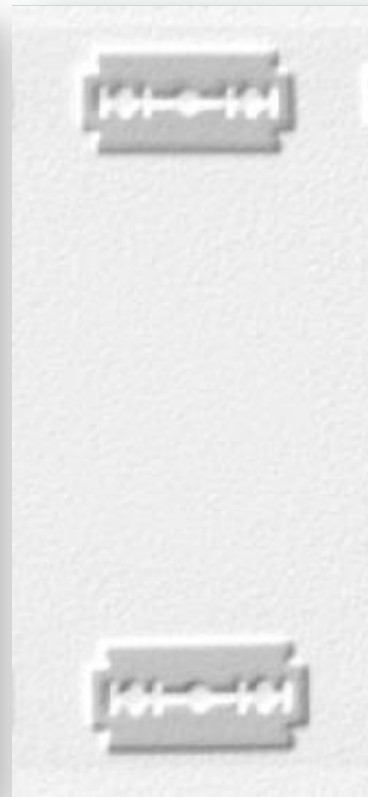
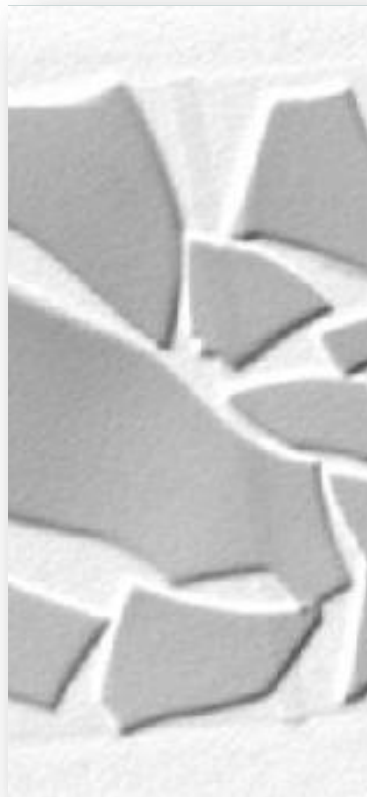
- Detonators
- Potentially explosive material
- Potential incendiary material
- Trigger switches
- Power supplies
- Wire
- Shrapnel – Nuts , Bolts ball bearings

TR15 has the capability to detect – granular incendiary material such as sugar chlorate as well as TATP and other plastic explosive variations



**TR15+ Smart Scan** is supplied with Todd Research - Advanced Powder recognition software onboard. This unique image enhancing function can perform a detailed examination of suspect packages. The TR15 will detect the collection of small amounts of powder ( as little of 3 grams ) . APR software enables the use to break down the image and examine minute differences in the density of the material being scanned. Powder threats continue to be a instigated by individuals looking to create disruption as well as more committed bio-terrorists. TR15 can reduce the impact of bio-hazard powder attacks with the possibility of early detection and containment

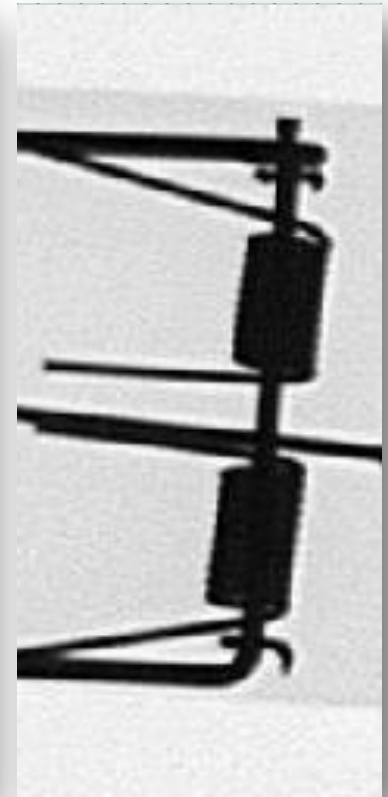
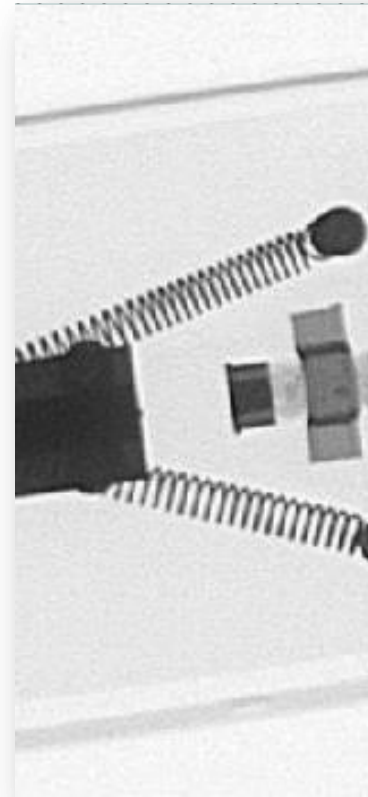
**Bio  
Hazardous  
Powder  
Threats**



## Low-Tech Threats

**Low –Tech Threats** can also cause considerable harm as well as psychological trauma. TR15 will enable users to identify a range of threats that may be low-tech but intend harm. These include sharps , glass , blades , biological matter . It is also possible to detect the presence of faecal matter , blood and other biological threats , if the material is in sufficient quantity.

## Improved mechanical threats



**TR15 Smart Scan** can be used effectively to identify improvised mechanical threats . Typical threats in this category include , improvised , mouse-trap devises , shot gun cartridge and other spring loaded , victim initiated threats .

## TR15 + Smart Scan

The very latest generation TR15-cabinet scanner provides a new benchmark of threat detection and image management for compact cabinet scanners. At the heart of the TR15-CT4 is a complete new software platform, managing the functionality and an intuitive user interface via a 22 inch touch screen monitor. The smart card login means the TR15-CT4 can be configured to enable data collection of individual user sessions further enhancing the effectiveness of the operators.



## TR15 + Smart Scan Features and Functions



## Simple operation

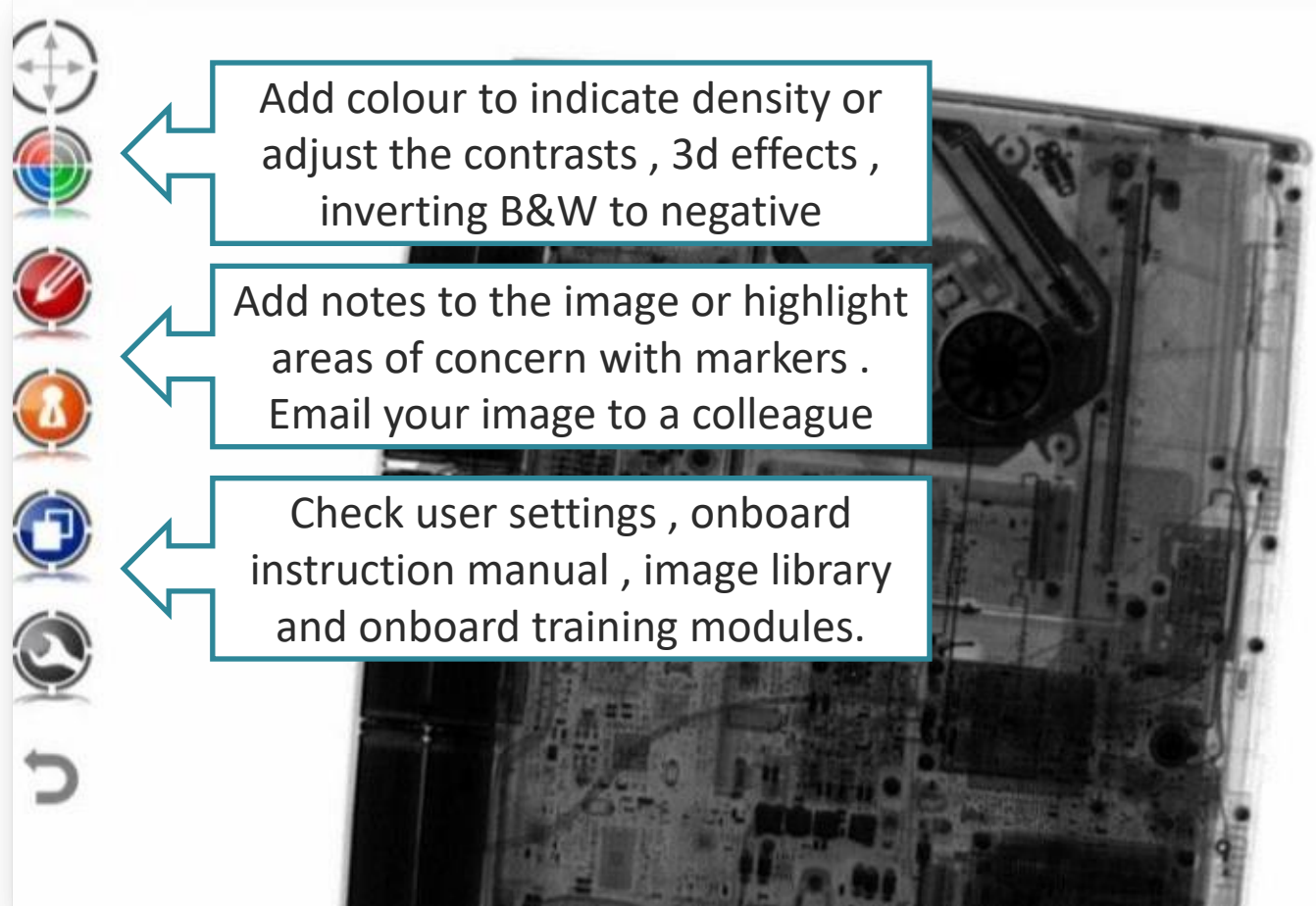
### TR15 Smart Scan

Offers extremely simple default settings and controls to enable the user to scan quickly and effectively.

Each user has swipe card access to the unit and once the package is inside the cabinet, the X-Ray image can be produced in a single press of a button.

For further enhancements to the X-Ray image you can control the unit with an intuitive on-screen control panel



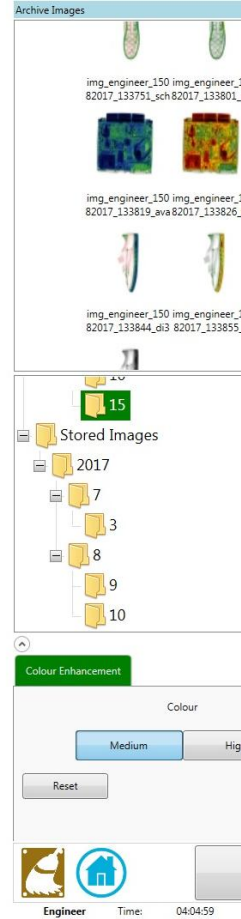
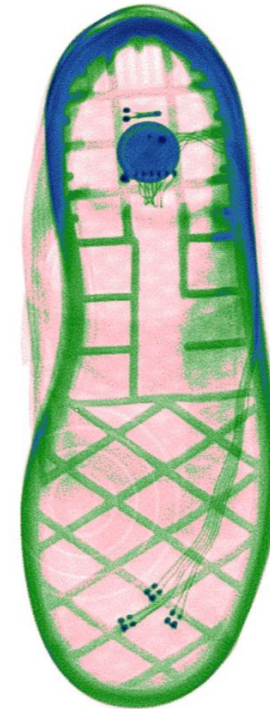
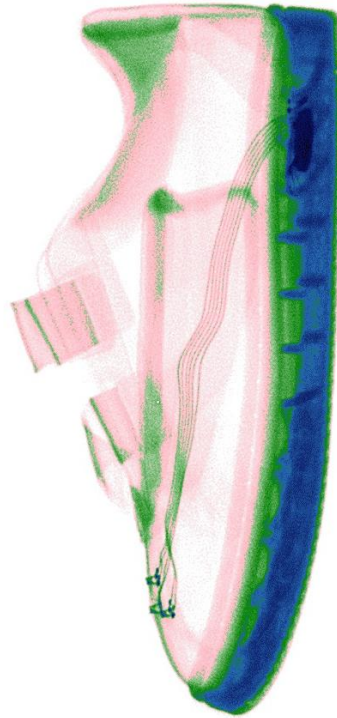


## Enhancing X-Rays

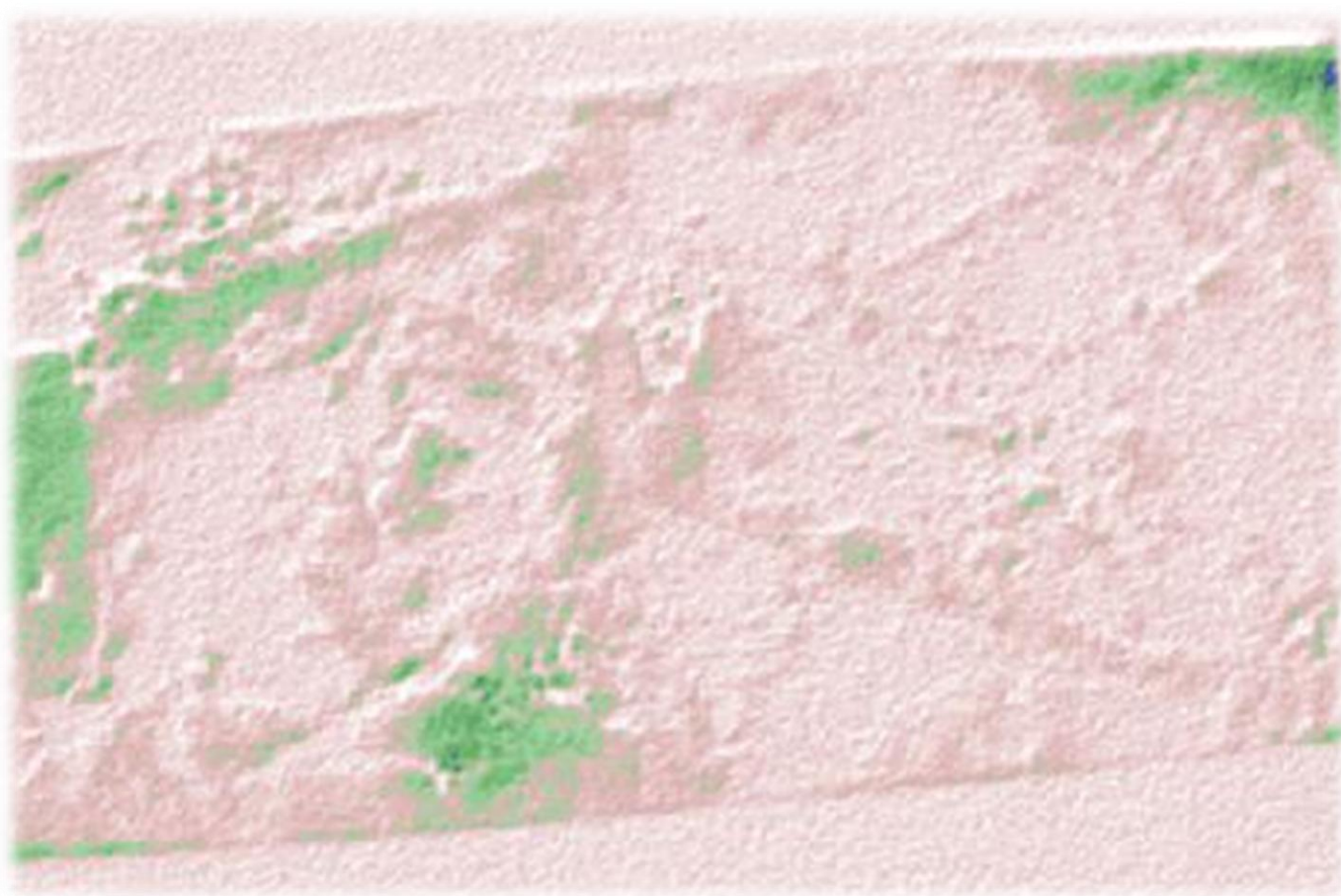
---

TR15 produces high quality HD images which can be further enhanced. Operators can choose to enhance images by a variety of different methods. Black and White images can be inverted ( in negative ) . Images can be produced in colour indicating the density of material being scanned. They can be repositioned , zoomed . Do all of this directly from your touch screen.

## Special Functions

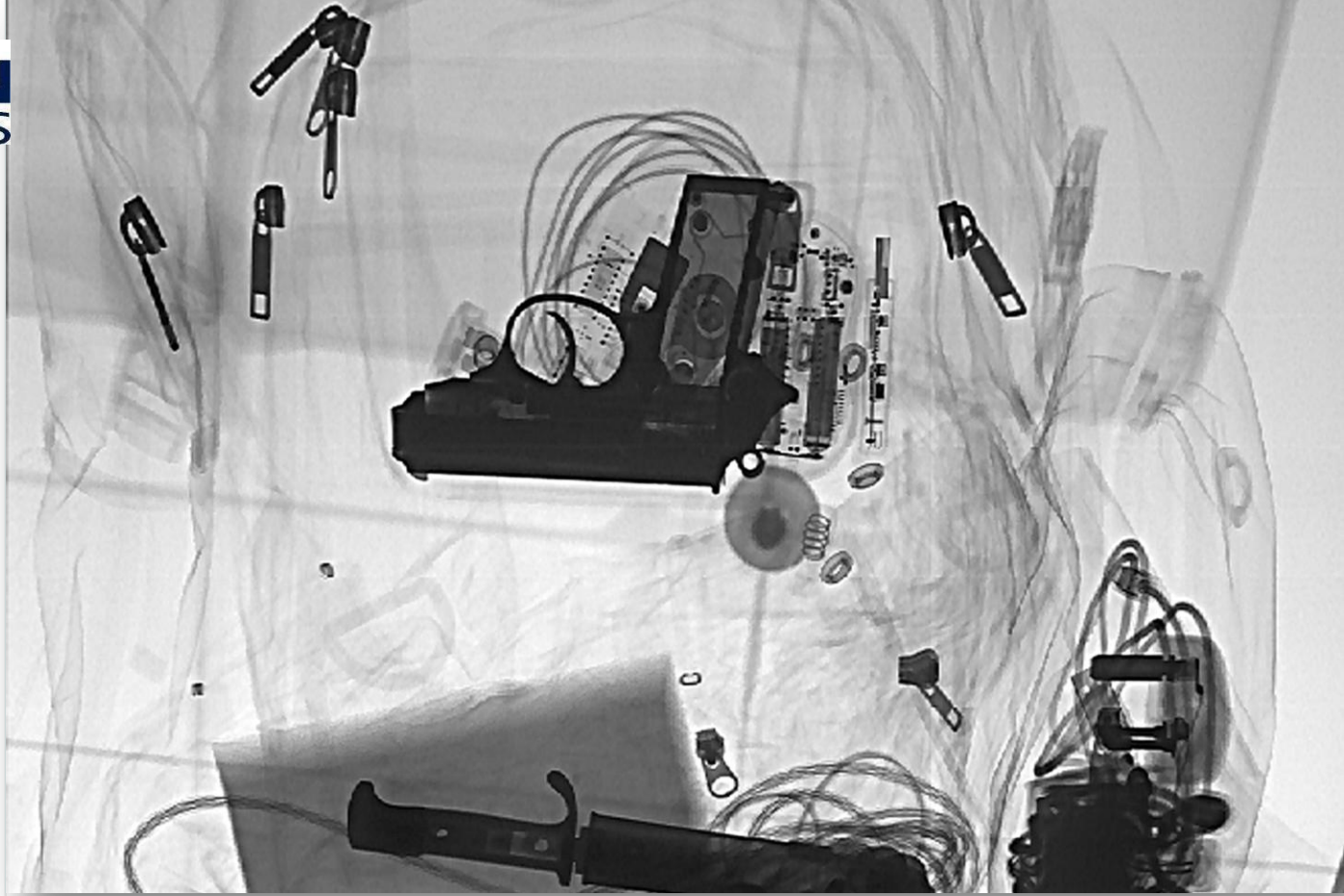


**TR15** allows the user to compare two images at the same time, side by side. All images are stored in an archive and can be recalled and viewed either individually or next to another image. This allows the user to reposition a suspect package if necessary and delivers a dual view.



**Enhanced  
Powder  
Recognition**

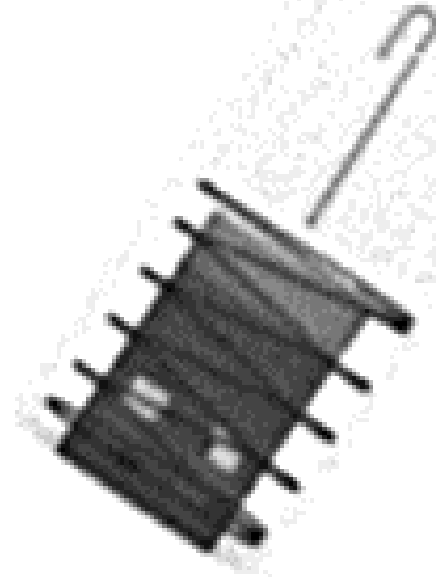
**TR15 + smart scan** has enhanced powder recognition software onboard as standard. This enhancement function offers a much finer definition against low density material. Operators can use this function to detect even small amounts of suspect material )as little as 3 grams when scanning in small batches.



## Scanning baggage and other items

TR15 is also more than capable of scanning baggage , parcels , postal tubes and other items of interest.

X-Ray images do not interfere with electronic equipment , cameras or items generally found in baggage.



**Protecting  
sensitive  
information**

TR15 can be used to scan baggage and belongings in a stop and search scenario.

# Footprint



## General Dimensions – TR15-CT4

### Cabinet

Height: 1504mm  
Width: 455mm  
Depth: 670mm  
Net Weight: 160kg

### Image Area

Width: 409mm  
Depth: 547mm

### Inspection Chamber

Height: 540mm  
Width: 448mm  
Depth: 586mm

### Door Opening

Height: 535mm  
Width: 370mm

## Product Specification

### Image and Unit Performance

- Touch Screen LCB 22" Monitor
- Image Resolution 1910 x 1080 pixels
- Wire Resolution: 36AWG
- Steel Penetration: 3mm

### X-ray Generator

- Anode Voltage 90kV

### Operating Requirements & Environment

- Power Requirement: 240v/110v, 50/60Hz, 1000W
- Operating Temperature: 0 to +40°C
- Storage Temperature: -15°C to +50°C
- Relative Humidity: 85% non condensing
- Supplied with 1.5m power cable

### Health & Safety and Compliance

- All Todd Research equipment complies with applicable International Health & Safety regulations
- Leakage dose at outer surface <1.0µSv/h as specified in Ionising Radiation Regulations 1999 (IRR1999)
- Complies with European Directive 93/68/EEC
- Twin circuit electro-magnetic safety interlocks to BS EN 60204-1

### Optional Extras

- Inkjet Printer
- Monitor Stand
- Cabinet Test Piece (CTP)
- External Uninterrupted Power Supply (UPS)

