

The demands on an organisation to protect the welfare of its personnel and critical infrastructure from attempts to disrupt operational continuity are topics requiring constant review.

When the requirement calls for a compact cabinet X-ray scanner with the detection capability associated with the high volume units, the **TR10** is the scanner of choice.

It can be floor mounted for easy access while seated or desk mounted for eye level operation. The **TR10** is ideal for low volume use in particular for executive mail scanning.

We See Things Differently

The in-built enhancement tools of the **TR10** enable the captured image to be further investigated. The remote networking capabilities make for easy sharing and storage of images and can be utilised as part of the organisations escalation process. With Enhanced Powder Detection (EPD™) software as standard, powder based threats items can also be interrogated.

Cabinet X-ray Scanners Can Be Used For Multiple Applications:

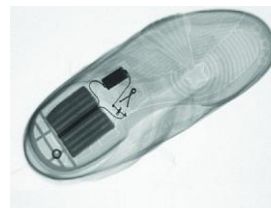
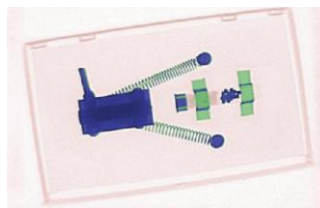
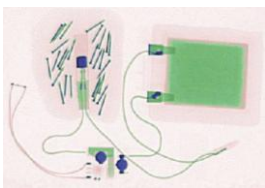
- ✓ Mail Rooms
- ✓ Reception Areas (Scanning of post)
- ✓ Goods In (screening of parcels)
- ✓ Executive mail screening
- ✓ Loss Prevention
- ✓ Contraband detection

TR10

Compact Cabinet X-ray Scanner



■ Design ■ Manufacture ■ Installation ■ Training ■ Service



Features and Benefits

Feature	Benefit
Image Enhancement	
EPD™ Enhanced Powder Detection	Heightened ability to identify threats conveyed via powder based elements
Negative Image Function	Identity of high density materials. e.g. (metal) shown up white against a black background
High Density Alert	Aids identification of materials such as plastic explosives
Medium Density Alert	Identification of medium density such as alloys & mild steel
3 Point Density Alert	Elements of a 'suspect devices' metal components e.g. detonators & batteries are more easily defined
Operating System	
"One Touch" to energise X-Ray generation	Simple 3 second quick operation maximises through-put of mail
User admin log in	Record of scanner use ensures operation is undertaken only by designated operators
Record user metrics	Management of operators ensuring safe, correct and effective processing
Administrator Function	Manage data related to scanner usage. Identification of further training requirements
Operator Icon toolbar	Quickly selection of tools to verify object is " Safe or Suspect" then to store or share the image
Training CD	Optimises scanner use and heightens threat awareness
Image Storage & Sharing	
Print/Export images	A hard copy library can be created for reference or to aid image share
Automatic Image archiving	Cross reference and accelerated referral to security personnel
One Touch Email Function	Enables escalation process to be shared across departments

General Dimensions – TR10

Cabinet

Height : 1020mm
Width: 430mm
Depth: 488mm
Net Weight: 75kg

Image Area

Width: 387mm
Depth: 272mm

Door Opening

Height: 340mm
Width: 343mm

Inspection Chamber

Height: 345mm
Width: 423mm
Depth: 410mm

Product Specification

Image and Unit Performance

- TFT Monitor 19" LCD
- Image Resolution 1280 x 1024 pixels
- Wire Resolution: 36AWG
- Steel Penetration: 3mm

X-ray Generator

- Anode Voltage 80kV

Operating Requirements & Environment

- Power Requirement: 240v/110v, 50/60Hz, 1000W
- Operating Temperature: 0 to +40°C
- Storage Temperature: -15°C to +50°C
- Relative Humidity: 85% non condensing
- Supplied with 1.5m power cable

Health & Safety and Compliance

- All Todd Research equipment complies with applicable International Health & Safety regulations
- Leakage dose at outer surface <1.0µSv/h as specified in Ionising Radiation Regulations 2017 (IRR17)
- Complies with European Directive 93/68/EEC
- Twin circuit electro-magnetic safety interlocks to BS EN 60204-1

Optional Extras

- Inkjet Printer
- Monitor Stand
- Cabinet Test Piece (CTP)
- External Uninterrupted Power Supply (UPS)

TR10 - Front View

TR10 - Side View

